



**ViW**  
BY ATILIER LEATHERCRAFT (ISTANBUL)

# Product Catalogue

2023 / 2

you  
are  
the  
author  
of  
your  
life

ViW is more than just a brand; it's the story of a mother and daughter who value effort, craftsmanship, quality, and most importantly, love. ViW, short for "Very Important -and Intelligent- Women" represents the resilient and confident women who will never let any obstacle weave them off the path they were destined to walk on.

Our symbol, the semicolon, which we bear proudly, represents the women who refuse to let their stories end with a period at any roadblock, and instead will put a semicolon, overcome the obstacles and continue to write their own destiny.

The product you possess is a result of the craftsman's attention to detail, their dedication to their craft, their passion, love, respect, and responsibility.

This product has been carefully prepared with the same love and a sense of responsibility, bringing together the best materials with craftsmen who carry years of experience, to accompany you for many years and be there with you in countless happy moments. We thank you for choosing our product, believing that you deserve the highest quality and craftsmanship. As you write your own happy story, we hope you use your bag with the same love and passion.





TOTE BAG







## LARGE MULTIPURPOSE BAG (TOTE Bag)

100% Calf Leather

### Product Description

The ViW Tote bag stands out with its comfortable, spacious, and highly functional practical design. Crafted from soft calf leather with thick double stitching for added durability, this bag features several compartments for organizing essential items, including two separate large compartments. The zippers on both sides of the model, extending down, allow for adjusting the sides and enhancing the silhouette of the bag. This also adds a visual appeal to the model with the contrasting color of the leather used inside, providing a unique style and richness. This large, spacious, and multi-compartment model is designed to simplify daily life, making it ideal for carrying accessories such as a tablet, files, and books during work or university life. It combines both comfort and stylish elegance, reflecting a versatile look. The adjustable ViW sports column strap, provided with the model, offers the option of shoulder or crossbody use. It's a perfect model that can be used by both young girls and adult women, catering to a wide range of preferences and needs.

### Dimensions

Width: 41 cm (16.14 inches)

Height: 39.5 cm (15.55 inches)

Depth: 21 cm (8.27 inches) when side zipper is open

Min & Max Column Strap Length:

86.5 - 129 cm (34.06 - 50.79 inches)

Min & Max Shoulder Strap Drop:

23 - 28.5 cm (9.06 - 11.22 inches)

### Usage

Shoulder / Cross-Body

### Color Variations



Cognac / Orange Red  
VS-TOT2301/CG.OR



Cognac / Cashmere  
VS-TOT2301/CG.CH



Orange Red / Saffron  
VS-TOT2301/OR.SA



Crocodile / Cashmere  
VS-TOT2301/CC.CH



Crocodile / Pearly  
VS-TOT2301/CC.PY



Cashmere / Pinterest Red  
VS-TOT2301/CR.PR



Black Denim / Cobalt Blue  
VS-TOT2301/BD.CB



Black Denim / Mavericks Blue  
VS-TOT2301/BD.MV



Black Denim / Crocodile  
VS-TOT2301/BD.CC



Black Denim / Pearly  
VS-TOT2301/BD.PY

### Compartments

- 2 main compartments
- 1 inner center pocket
- 1 inner pocket
- Two side pockets when side zippers are closed
- Section that can be used as an extra pocket on the base (slippers, shoes, umbrella can be placed)

### Other Features and Accessories

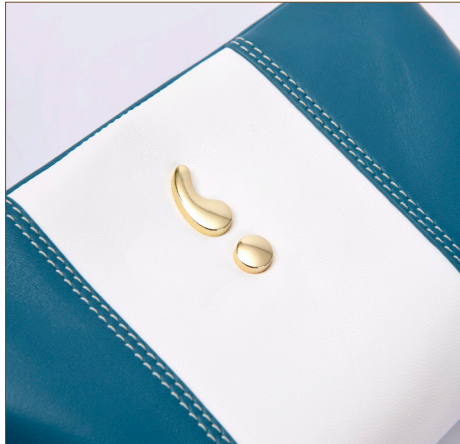
- Adjustable leather shoulder straps
- 1 removable column strap with adjustable length for cross shoulder carrying
- Strap extends from the inside of the bag with a metal loop at the end (keychain can be attached)
- Strap hanging from the mouth of the bag with a light gold metal logo with the signature of the ViW brand on a leather path at the end.
- Light gold metal accessories
- Dust bag and brand-printed box
- Proudly crafted by ViW Leathercrafts. Made in İstanbul





NISAN - 3 Way Bag





## NISAN - 3 Way Bag (Waist, Shoulder, Chest)

100% Lambskin

### Product Description

The ViW mini waist bag offers a personalized design spirit with its practical design. Crafted entirely from lambskin inside and out, this product stands out with its soft and lightweight texture. The logo signature of the ViW brand in light gold metal is featured on the flap. When you open the magnetic flap, compartments for storing all essential items are revealed. Thanks to the soft and flexible texture of the leather, you can easily place your phone, wallet, lipstick, earphones, and more inside. The leather belt, easily threaded through the belt loops on the back surface of the model, provides ease of carrying around the waist while serving as a stylish accessory for pants and dresses. Moreover, using this leather belt, you can comfortably carry your bag over your shoulder or across your chest. The bag comes with two detachable chain straps and an adjustable column strap, offering the flexibility to carry it on your shoulder or crossbody. The chain strap can be wrapped around the flap, allowing the bag to be carried by hand. These versatile carrying options make it the ideal magical everyday bag. Even a young girl can integrate the ViW sports strap for casual use when going to school or hanging out with friends, while an adult woman can attend an event with an elegant chain strap in the evening.

### Dimensions

Width: 20 cm (7.87 inches)

Height: 11 cm (4.33 inches)

Depth: 4 cm (1.57 inches)

Min & Max Column Strap Length: 86.5 - 129 cm (34.06 - 50.79 inches)

Chain Strap Length: 112 cm (44.09 inches)

Belt / Chest Strap Length: 112 cm (44.09 inches)

### Usage

Waist / Chest / Shoulder / Cross-Body

### Color Variations



Navy Blue / Latte  
VS-NIS2301/NVLA



Natural Black / Cashmere  
VS-NIS2301/NB.CH



Medium Turquoise / Pearly  
VS-NIS2301/MT.PY



Pearly / Metallic Anthracite  
VS-NIS2301/PY.AN



Silver / Metallic Anthracite  
VS-NIS2301/SL.AN



Light Dore / Copper  
VS-NIS2301/LD.CP



Medium Turquoise / White  
VS-NIS2301/MT.WH



Orange Red / White  
VS-NIS2301/OR.WH



Emerald / Faded Yellow  
VS-NIS2301/EM.FY



French Fuchsia / Grey Cloud  
VS-NIS2301/FF.CG



Natural Black  
VS-NIS2301/NB.NB

### Compartments

- Wide interior compartment
- 2 main open compartments
- 1 main zippered compartment
- 3 inner business card holder

### Other Features and Accessories

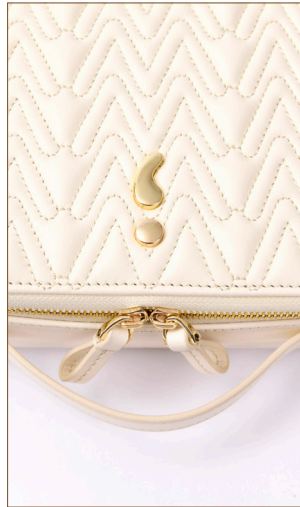
- Magnetic closure
- Rear body belt loops
- 1 removable, adjustable belt that can be worn at the waist, but also can be hung on the chest.
- 1 long detachable chain strap for shoulder or crossbody carry
- Light gold metal accessories
- 1 removable column shoulder strap with adjustable length for long shoulder or cross-body carry
- Dust bag and brand-printed box
- Proudly crafted by ViW Leathercrafts. Made in İstanbul





BOX BAG





## BOX BAG

100% Lambskin

### Product Description

The ViW box bag is a modern design. Crafted from lambskin both inside and out, this bag stands out with its unique quilted effect and a spacious compartment that includes three card slots to meet all your daily needs. The removable chain strap, completed with a leather piece for comfortable and adjustable use over the shoulder or as a crossbody, while the handle allows for hand-carrying. The adjustable ViW sports column strap, provided with the model, enables a small change to a casual, relaxed style, allowing your bag to accompany your outfit in a completely different way. In other words, with one model, you can either highlight your sophisticated, glamorous style or switch to a casual, sporty look in an instant. Even a young girl can integrate the ViW sports strap for casual use when going to school or hanging out with friends, while an adult woman can attend an event with an elegant chain strap in the evening.

### Dimensions

Width: 18 cm (7.09 inches)

Height: 13 cm (5.12 inches)

Depth: 5 cm (1.97 inches)

Min & Max Column Strap Length: 86.5 - 129 cm (34.06 - 50.79 inches)

Min & Max Shoulder Strap Length: 104 - 115 cm (40.94 - 45.28 inches)

### Usage

Long Shoulder / Cross-Body / Hand

### Color Variations



Yale Blue  
VS-BOX2301/YB



Pearly  
VS-BOX2301/PY



Emerald  
VS-BOX2301/EM



Sangria  
VS-BOX2301/SG



Paris White  
VS-BOX2301/PW



Grey Cloud  
VS-BOX2301/GC



Black Dimin  
VS-BOX2301/BD



Faded Yellow  
VS-BOX2301/FY



Mavericks Blue  
VS-BOX2301/MV



Light Turquoise  
VS-BOX2301/LQ

### Compartments

- 1 main compartment
- 3 inner card holders

### Other Features and Accessories

- Metal accessory on the front body with the signature of the ViW brand
- Zipper closure
- 1 leather hand strap for hand carrying
- 1 piece detachable leather-chain mixed shoulder strap with adjustable length for long shoulder or cross-body carry
- 1 removable sport column shoulder strap with adjustable length for long shoulder or cross-body carry
- Light gold metal accessories
- Dust bag and brand-printed box
- Proudly crafted by ViW Leathercrafts. Made in İstanbul





SLIM CLUTCH





## SLIM CLUTCH

100% Calf Leather

**Product Description** The ViW slim clutch seamlessly combines modernity with timeless elegance. Crafted from flexible calf leather, both inside and out, this unique product features distinctive quilted stitching and showcases its signature with a light gold metal logo bearing the ViW brand on the front. This spacious clutch will complement your refined and sophisticated style in your everyday life, business dinners, and special occasions with its inherent grace.

**Dimensions** Width: 29 cm (11.42 inches)  
Height: 21 cm (8.27 inches)  
Hand Strap Length: 20 cm (7.87 inches), 23 cm (9.06 inches) with metal hook

**Usage** Hand / Wrist

### Color Variations



Champagne  
VS-CLT2301/CH



Pearly  
VS-CLT2301/PY



Copper  
VS-CLT2301/CP



Beaver  
VS-CLT2301/BV



Seashell  
VS-CLT2301/SS



Grey Cloud  
VS-CLT2301/GC



Black Denim  
VS-CLT2301/BD

### Compartments

- 1 large main compartment
- 1 interior pocket
- 3 inner card holder

### Other Features and Accessories

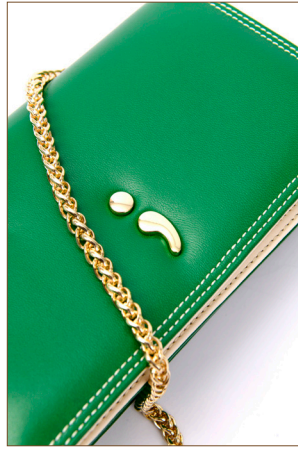
- 1 removable leather hand strap for easy hand carrying
- Metal accessory on the front body with the signature of the ViW brand
- Light gold metal accessories
- Dust bag and brand-printed box
- Proudly crafted by ViW Leathercrafts. Made in Istanbul





SHOULDER WALLET BAG WITH MINI CLUTCH





## SHOULDER WALLET BAG WITH MINI CLUTCH

100% Lambskin

### Product Description

The ViW-signed mini shoulder bag for the elegant urban woman seamlessly blends functional design with your modern spirit. Crafted entirely from lambskin inside and out, this product stands out with an embossed ViW signature on the back, showcasing craftsmanship. Concealed within, practical leather accessories accommodate all essential items, making it an ideal companion for both day and evening. Moreover, the surprise of using these accessories independently from the bag awaits you. The bag's size, along with its accessories, allows you to carry your phone and lipstick. The top handle, completed with a removable chain, enables the bag to be carried by hand, on the shoulder, or as a crossbody. The adjustable ViW sports column strap, included with the model, allows your bag to accompany your outfit in a completely different casual, relaxed style with a small shoulder strap change. A young girl can integrate the ViW sports strap for casual use when going to school or hanging out with friends, while an adult woman can attend an event with an elegant chain strap in the evening.

### Dimensions

Width: 21,5 cm (8.46 inches)

Height: 13 cm (5.12 inches)

Depth: 6 cm (2.36 inches)

Min & Max Column Strap Length: 86,5 - 129 cm (34.06 - 50.79 inches)

Chain Strap Length: 112 cm (44.09 inches)

### Usage

Shoulder / Cross-Body

### Color Variations



Grey Cloud / Natural Black  
VS-WAL2301/CC.NB



Natural Black / Pearly  
VS-WAL2301/NB.PY



Emerald / Pearly  
VS-WAL2301/EM.PY



Light Dove  
VS-WAL2301/LD.LD



Metallic Anthracite  
VS-WAL2301/AN.AN



Copper  
VS-WAL2301/CP.CP



Light Turquoise / Black Denim  
VS-WAL2301/LT.BD



Latte / Cobalt Blue  
VS-WAL2301/LA.CB



Faded Yellow / Emerald  
VS-WAL2301/FY.EM



Munsell Red / Latte  
VS-WAL2301/MR.LA



Natural Black  
VS-WAL2301/NB.NB

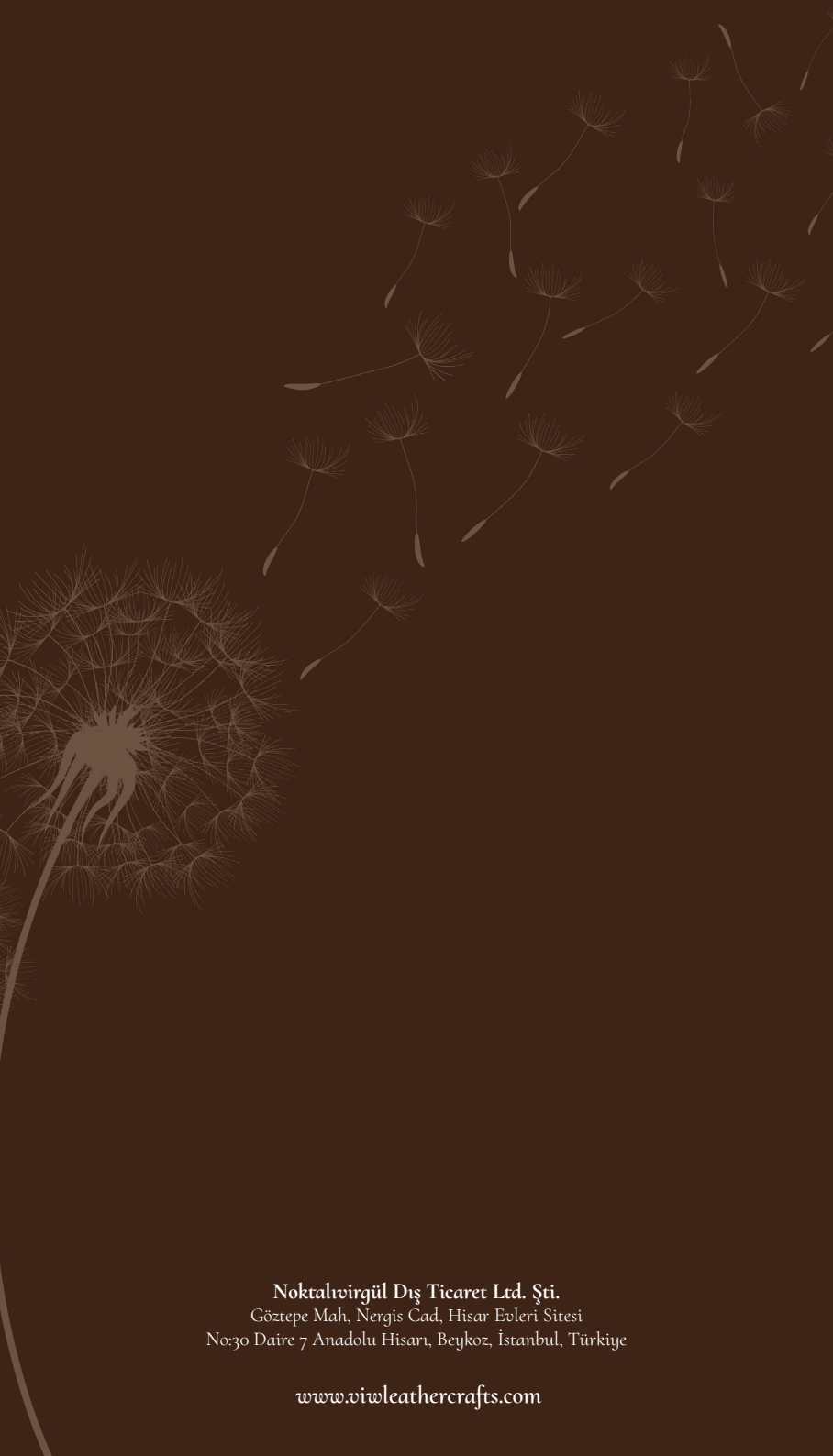
### Compartments

- 1 main compartment
- 1 interior pocket
- 1 removable card holder (16 card compartments) and banknote wallet
- 1 mini clutch with removable zipper

### Other Features and Accessories

- Magnetic closure
- 1 long chain strap for shoulder or cross-body carry
- 1 removable column shoulder strap with adjustable length for long shoulder or cross-body carry
- Embossed ViW signature on the back body
- Light gold metal accessories
- Dust bag and brand-printed box
- Proudly crafted by ViW Leatherscrafts. Made in İstanbul





**Noktalıvirgöl Dış Ticaret Ltd. Şti.**  
Göztepe Mah, Nergis Cad, Hisar Evleri Sitesi  
No:30 Daire 7 Anadolu Hisarı, Beykoz, İstanbul, Türkiye

[www.viweathercrafts.com](http://www.viweathercrafts.com)